

**BUILDING
MOUNTED
FIXTURES**



UNVEIL NIGHTTIME BEAUTY
WITH ARCHITECTURAL LUMINAIRES




Add beauty and focus to modern or traditional structures with the Lowell building mounted fixture. The luminaire offers versatility with its sleek industrial vibe while adding depth and sparkle to the overall lighting scene.



Lowell, Round Canopy – 15”

Beam Uniformity

Tasteful architectural form complements all exterior building styles. The classic cylinder wall mount with high-performance optics and beam uniformity transforms the outdoor space.



Lowell Recessed Lens, Round Canopy – 19”



Lowell 45, Round Canopy – 26’ 5/8”



Lowell, Rectangular Canopy – 15”



Lowell Recessed Lens, Rectangular Canopy – 19”



Lowell 45, Rectangular Canopy – 26’ 5/8”

Built to Last

Lowell brings together utility and style. Constructed with sturdy rust-resistant aluminum, a heat-strengthened borosilicate glass lens, and our proprietary LED, offering long-lasting durability.

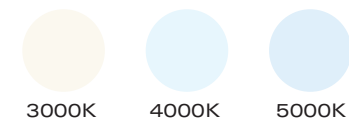


Lowell

Outputs

1100 delivered lumens with indirect and direct lighting

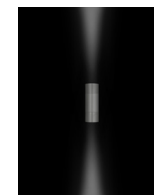
Color temperatures



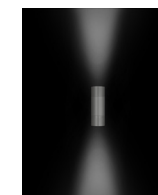
Controls

Dimmable with low voltage magnetic dimmer

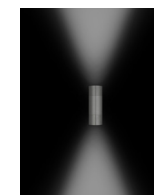
Optics



Narrow Spot (10°)



Narrow Flood (25°)



Medium Flood (40°)

Width

164 mm

Where light
intersects
architecture

Café Demoiselle

Commercial Sign Light: Placertwin, 3000K, 40°
Wall Mounted Light: Lowell 45, 3000K, indirect/direct, 30°



Options & Flexibility

INDIRECT AND DIRECT LIGHTING

Consistent color temperature casts vertical beams of light, giving a sense of height and discreet pools of illumination.

FIELD-CHANGEABLE OPTICS AND ACCESSORIES

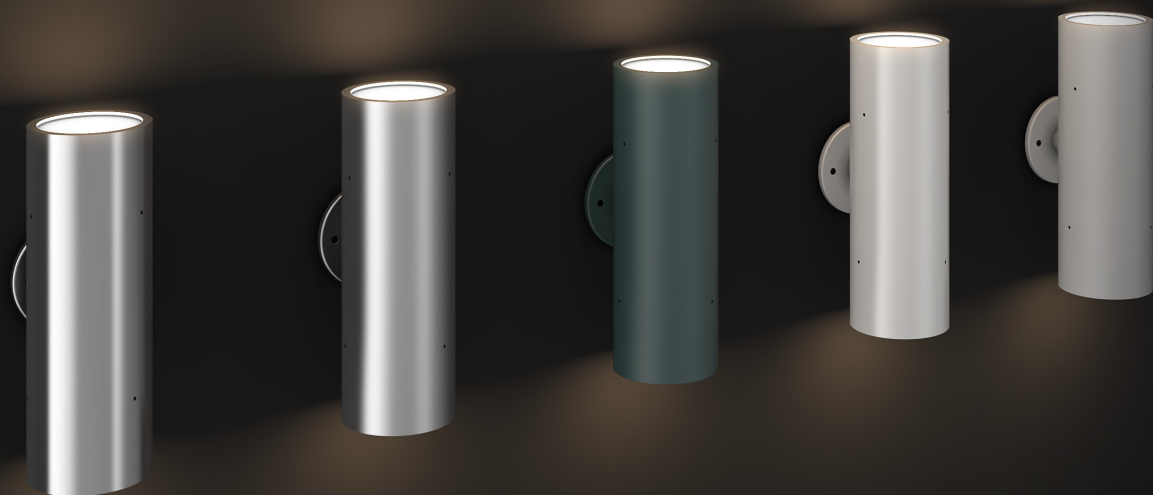
Optics and accessories are easily field-replaceable, ensuring the intended lighting design is maintained.

LOW MAINTENANCE AND LONGER LIFESPAN

Heat-strengthened borosilicate glass lens, proprietary replaceable LED with engineering know-how offers a better quality of light and a longer lifespan.

MOUNTING ACCESSORIES

Lowell cultivates a heightened sense of style and a sense of space with numerous finishes, accessories, and cap styles.





Iconic Design

It's a modern design in a compact form. Whether you need sign lighting for an upscale boutique storefront, ultra-hip hotel sign or wall lighting, these luminaires add brilliance with a focus on quality and innovation.



Placer, 5000K, 35°, short flush external cap, 24" straight stem, flat lens



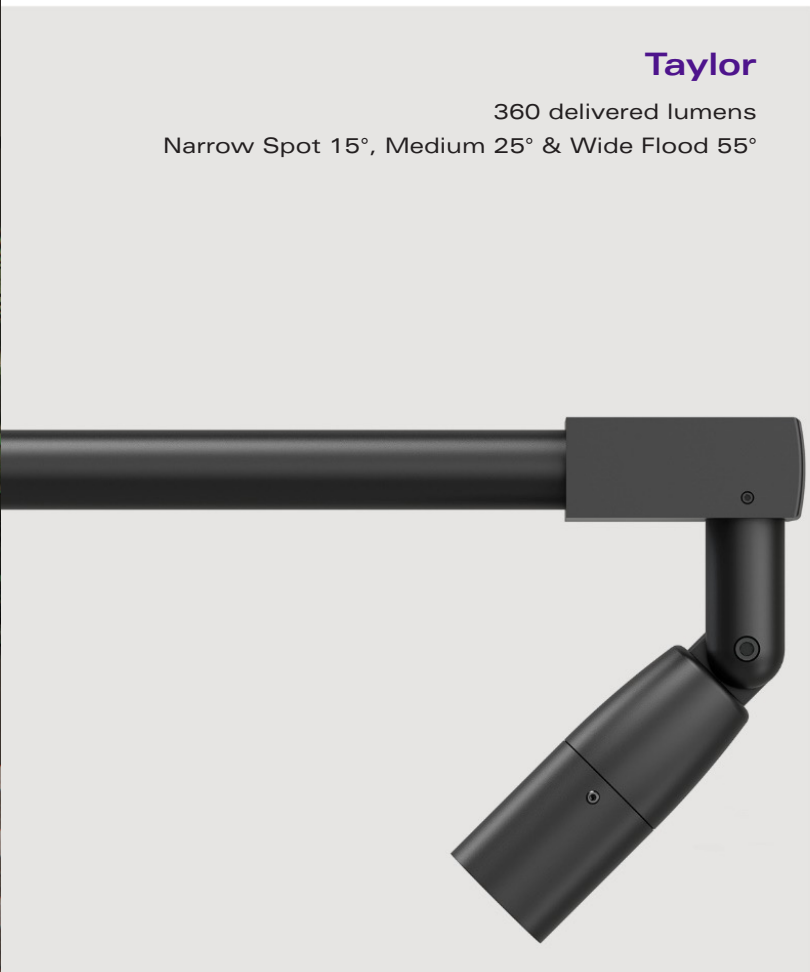
Placertwin

2,100 delivered lumens
Narrow Spot 15° to Wide Flood 55°



Placer

1,100 delivered lumens
Narrow Spot 15° to Wide Flood 55°



Taylor

360 delivered lumens
Narrow Spot 15°, Medium 25° & Wide Flood 55°



Taylortwin

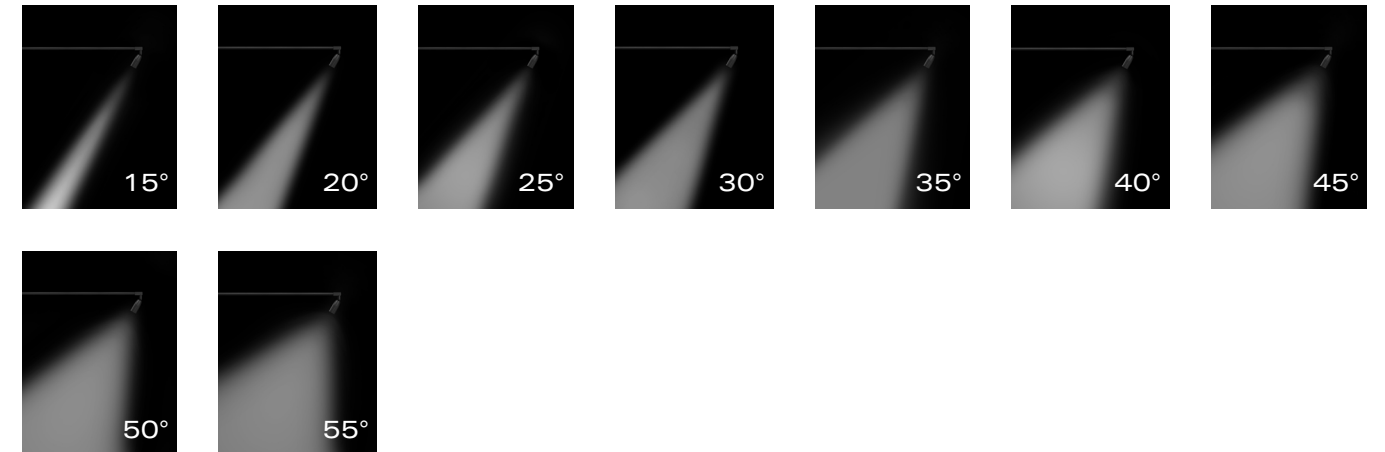
700 delivered lumens
Narrow Spot 15°, Medium 25° & Wide Flood 55°

Quality of Light

With a wide selection of optics, controls, sizes and mounting options, LED sign lighting produces bright, direct light that shines evenly across the entire surface of your commercial sign and is clearly visible from a great distance.



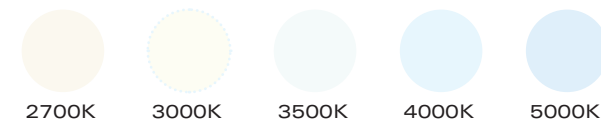
Distribution



Stems

3" | 6" | 12" - 48" stems, available in 6" increments | 45° - 12", 48" stems, available in 6" increments | 90° - 12", 48" stems, available in 6" increments | 180° - 12", 48" stems, available in 6" increments

Color temperatures

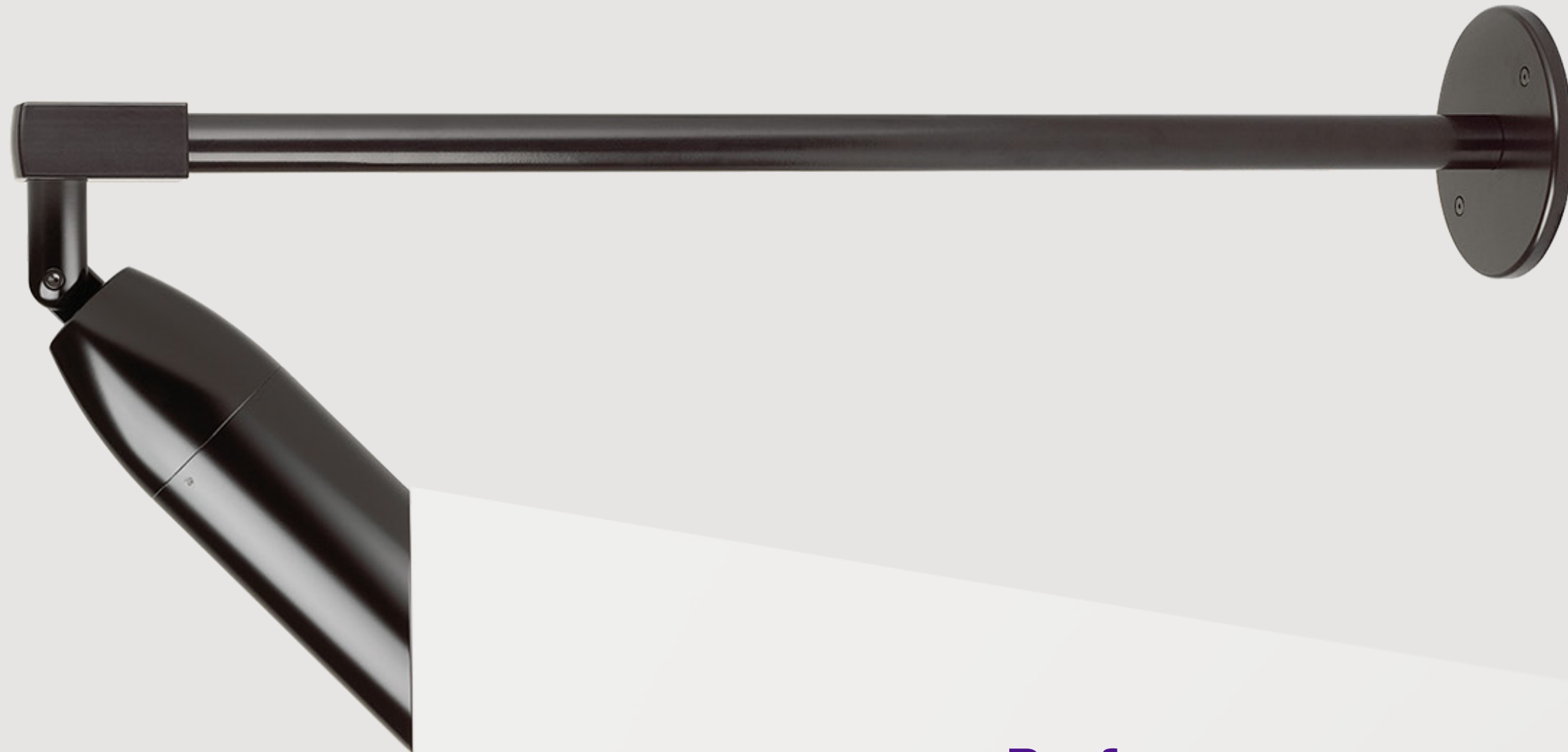


Controls

Dimmable | On/Off

Color Rendering Options

80CRI and 90 CRI



Performance

Advanced LEDs and optics assure efficient, uniform illumination. By night, the versatility of the luminaires is apparent, with a full palette of optical systems from which to choose.

- Infinite aiming capability with Tapered-Lock Technology
- Numerous combinations of accessories, color filters, shielding with any cap style
- Superior optical clarity and strength with borosilicate glass
- Durable polyester TGIC powder coat finish



Design

Select highlight, accent, or wall graze lighting for commercial signs or along walkways to add character and make architecture come alive. Whether you choose Placer or Taylor fixtures, their design makes them equally impressive during the day and has an entirely different vibe at night.



Commercial Sign Light: Placertwin, 3000K, 40°
Wall Mounted Light: Lowell 45, 3000K, indirect/direct, 30°

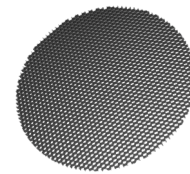


Commercial Sign Light: Placertwin, 3000K, 40°
 Wall Mounted Light: Lowell 45, 3000K, indirect/direct, 30°

External Caps

Short Flush | Recessed Lens | 45° Angle Cut

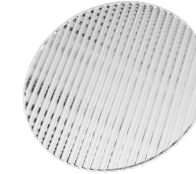
Internal Accessories



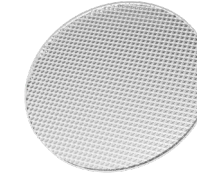
Honeycomb Louver



Prismatic Lens



Linear Spread Lens



Softening Lens

Internal Filters



Amber



Green



Light Blue



Mercury Vapor

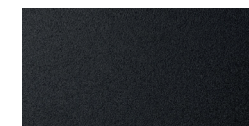


Medium Blue

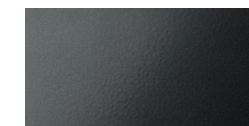


Red

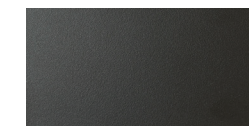
Finishes



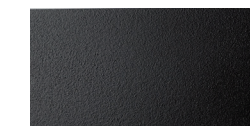
BL - Black Textured



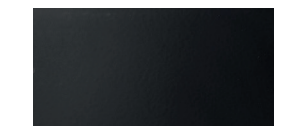
BRS - Bronze Smooth



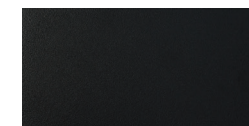
BRT - Bronze Textured



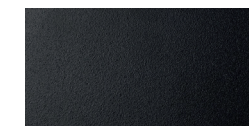
BZ - Brown Textured



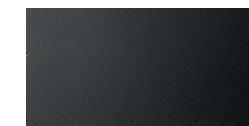
DBL - Designer Black Smooth



DBLB - Designer Black Textured



DDB - Designer Bronze



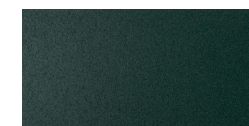
DDBT - Design Bronze Textured



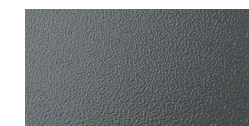
DNA - Natural Aluminum Smooth



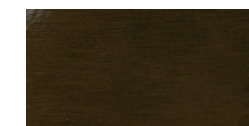
DWH - Designer White



GN - Green



GR - Gray



NBS - Natural Bronze Smooth



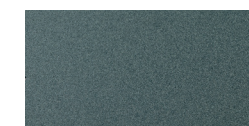
SND - Sand



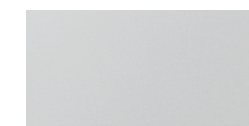
STG - Steel Gray



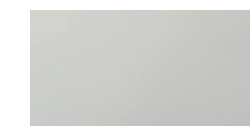
TVG - Terra Verde Green



VET - Verde Textured



WH - White Textured



WHS - White Smooth



RAL - Polyester Power Coat Color

Please refer to specific spec sheets as options vary according to model.



LET'S CONNECT



Hydrel.com/building-mounted-fixtures

Phone: 800.705.SERV (7378)

Techsupport-hydrel@acuitybrands.com
Productsupport-hydrel@acuitybrands.com

©2022 Acuity Brands Lighting, Inc. All rights reserved.

