



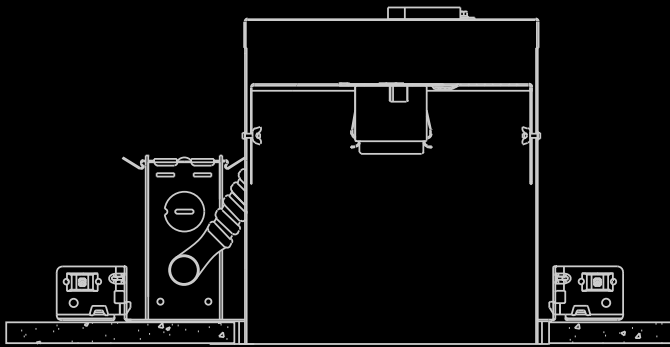
Juno® Canless Downlights

No housing required



JUNO®

Evolution of Residential Downlighting

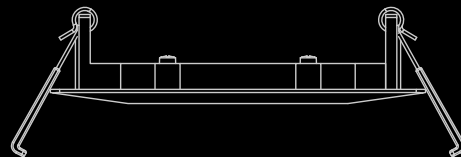
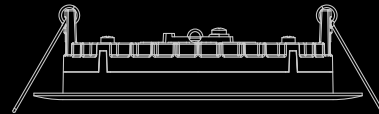
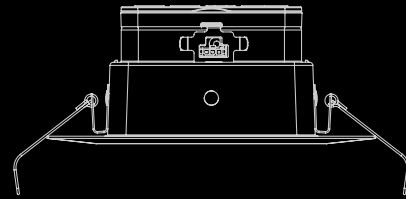


Traditional Housing, est. 1979

The Future of Residential Downlighting is Here

Think Canless

- No Housing Required
- Easy Installation
- Shallow Depth



Canless Downlights, est. Present-Day



Why Canless?

No Housing Required

Canless products eliminate the need for traditional downlight housings. By eliminating the housing, the canless design allows for easy remodel or new construction installation from below the ceiling.



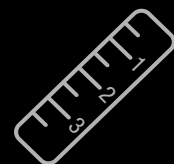
Easy Installation

Install canless products simply by sliding the driver box and spring clips up through the ceiling hole cut out, installing from below the ceiling. Fixture and remote driver box are IC rated for direct contact with insulation.



Shallow Depth

Canless downlights can be installed with as little as 2" of plenum which allows them to fit into ceiling spaces where most traditional recessed housings cannot fit.



Canless LED Downlighting Solutions

The future of downlighting is here

Think Slim

Wafer Canless Downlights



Wafer Downlights have a slim design that allows them to be installed in as little as 2" of plenum space making installation easy for remodel or new construction applications.

Size: 3", 4", 6" & 8" sizes

Style: Available in Flat, Regressed, Adjustable and Square options

Feature: Switchable White CCT (27K, 30K, 35K, 40K or 50K)

Finishes:



Matte White



Matte Black



Brushed Nickel



Oil-Rubbed Bronze

Think Smart

Smart Wafer Canless Downlights



Smart Wafer Downlights provide all of the benefits of the slim wafer, plus smart home connectivity.

Size: 4" & 6" sizes

Style: Available in Flat, Regressed & Adjustable options

Feature: Tunable White (2700K to 5000K)

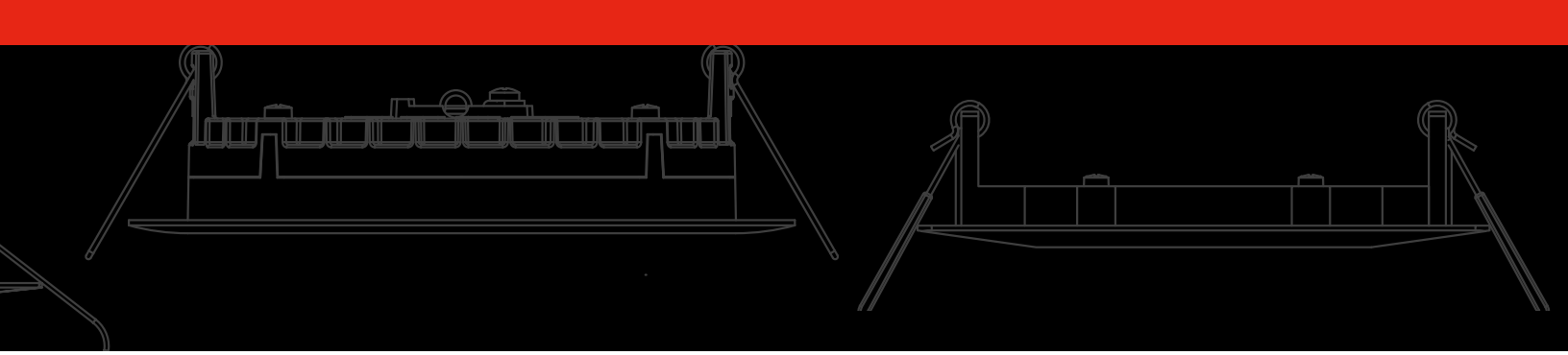
Connected: Control lighting via voice control or via App from virtually anywhere.

Finish:



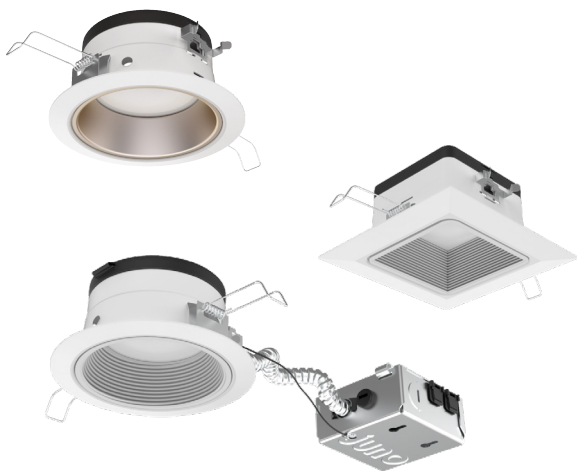
Matte White





Think Traditional

Podz™ Canless Downlights



Podz™ Downlights provide a deep regressed light source mimicking the appearance of a traditional recessed downlight and offers performance up to 1200 lumens making it a perfect solution for use in custom homes. Install Podz with as little as 3" of plenum space.

Size: 4", 5" & 6" sizes

Style: Available in Smooth or Baffle, Round or Square options

Feature: Adjustable Lumen Output (700L, 1000L, 1200L), Switchable White CCT (27K, 30K, 35K, 40K or 50K), WarmDim® Technology (2850K-1900K)

Finishes:



White

Black

Wheat Haze

Haze

Clear

Think Discrete

2" Canless Downlights



The sophisticated aesthetics and smaller aperture of the Juno® 2" LED downlight perfectly complements many of today's upscale residential and commercial interiors. Packed into this tiny fixture is an advance light engine that can produce up to 1,000 lumens with only 11 watts.

Size: 2"

Style: Available in Smooth, Baffle & Adjustable, Round or Square options

Feature: Advance light engine that can produce up to 1,000 lumens with only 11-watts

Finishes:

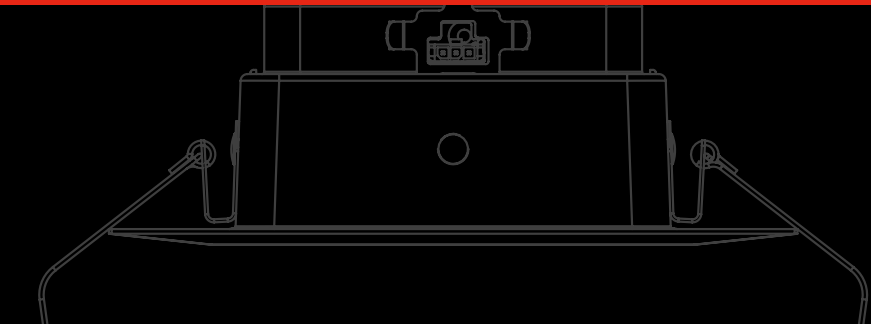


White

Black

Satin Nickel

Bronze



Think Accent

Mini Canless Downlights



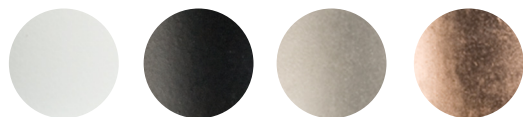
Juno® Mini Downlights open-up a multitude of task and accent lighting possibilities, especially when installation space is at a premium. Mini LED Downlights can squeeze into the tightest of places and are perfect for niches, soffits, displays, elevators or any tight space.

Size: 1"

Style: Available in Regressed & Adjustable, Round or Square

Feature: Ultra-compact design to easily integrate into the smallest of spaces, from kitchen soffits, to cabinetry and architectural niches

Finishes:



White

Black

Satin Nickel

Bronze





Ordering Information

Canless Slim			Ordering Example: WF6 SWW5 90CRI MW		
Trim Series	Trim Style	Color Temperature	Rendering Index	Finish	
WF4 4" Wafer LED Downlight	(blank) Flat Smooth	SWW5 Switchable White (2700K, 3000K, 3500K, 4000K, 5000K)	90 CRI 90+ CRI	MW Matte White	
WF6 6" Wafer LED Downlight	REG Regressed Baffle			MB Matte Black*	
WF8 8" Wafer LED Downlight				*WF8 is not available in Matte Black	

Canless Smart			Ordering Example: WF6C RD TUWH MW90CRI MW		
Trim Series	Trim Style	Color Temperature	Rendering Index	Finish	
WF4C 4" Smart LED Downlight	RD Round	TUWH Tunable White (2700K to 5000K)	90 CRI 90+ CRI	MW Matte White	
WF6C 6" Smart LED Downlight	REG Round Baffle				
	ADJ Round Adjustable				

Canless Traditional			Ordering Example: JPDZ6JB RDB1 WWH M6		
Trim Series	Trim Style	Color Temperature	Rendering Index	Finish	
JPDZ4JB 4" Juno Podz (Trim and Remodel Junction Box)	RDB1 White Round Downlight Baffle	SWW5 Switchable White (2700K, 3000K, 3500K, 4000K, 5000K, WarmDim)	90 CRI 90+ CRI	MW White	
JPDZ6JB 6" Juno Podz (Trim and Remodel Junction Box)					

To view more canless products, please visit www.JunoLighting.com/Canless

